

HV JUICE

GKD Modular Seals





The best lightweight fibreglass extension ladder in the world

Strong, 20% more rigid, and lighter to move. Little Giant's patent-pending Hi-Viz Green is one of the most visible colour hues to the human eye and provides better UV stability for harsh NZ conditions.

FEATURES

- ✓ Side mounted double pulley reduces force required to raise ladder
- ✓ Side mounted rope for unobstructed climbing and secure footing on each rung removing potential trip hazard
- ✓ Ground-Cue bottom rung for audible indication of last step
- ✓ Chain or web strap top attachments
- ✓ Integrated spirit level to ensure 100% levelling
- ✓ Integrated 4-in-1 incline level on side of ladder
- ✓ Wide climbing area - up to 50mm wider than comparable ladders
- ✓ Pole tethering system included
- ✓ Substantial space between rungs when retracted to fit gloved hands without risk of injury
- ✓ Patent-pending Sure-Set™ feet stay where you want them
- ✓ Delivered inspected with inspection label and serial number for ease of record keeping

OPTIONAL

- + **Fall arrest system - ANSI Z359.15 rated**, offers 100% fall protection on ascent and descent. Smooth hands-free up and down tracking, allows for 3-point contact at all times.



4-IN-1
INCLINE LEVEL



SIDE MOUNT
DOUBLE PULLEY



TETHERING
SYSTEM



FALL ARREST SYSTEM

MEETS ALL ANSI A14 AND AS 1892.1:2018 STRENGTH AND TESTING STANDARDS.

16'-32' models rated/tested to 170kg (36' & 40' rated/tested to 150kg). Tethering system included, secures ladder to the pole for lone workers.

**Little
Giant**
Ladder Systems



GKD Modular Seals

The perfect solution for sealing new pipe installations or retrofitting existing installations inside core drilled holes or wall sleeves. The modular structure allows installation on all kinds of pipes and diameter combinations.

FEATURES

- ✓ With integrated installation control (yellow indicator windows when required torque is reached) - no torque control key required
- ✓ No retightening required
- ✓ Nuts moulded into the pressure plate, therefore no loose parts
- ✓ Optimised bolt geometry
- ✓ Made in Germany
- ✓ Suitable for retrofit sealing
- ✓ Rubber EPDM or NBR, rust-free Stainless Steel screws and nuts, glass fibre reinforced polyamide press plates
- ✓ Gastight & watertight

APPLICATION RANGE

- ✓ Waterproof concrete stress class 1
- ✓ Waterproof concrete stress class 2



BEFORE

Two 508mm pipes enter the Akarana Pumping Station before the penetration sealing solution was installed.



AFTER

Custom fabricated separable Stainless Steel flanges and Hauff Technik GKD440 Modular Seals retrofitted to achieve a watertight seal.



A new generation in transformer support structures has arrived

This UV stabilised medium-density polyethylene (MDPE) plastic range is made to replace currently used concrete pads and supporting structures.

With Health and Safety front of mind, this range has been designed for ease of use, lightweight manoeuvrability, and environmental protection. The MDPE components are rotationally molded right here in New Zealand to the very clever design specification of our local engineers. They are both lightweight and strong, for fast and simple assembly on site.



FEATURES & BENEFITS

COST EFFECTIVE

- ✓ No heavy machinery required for installation
- ✓ Rotational moulded construction
- ✓ No excess materials used
- ✓ Supplied flat packed for shipping & storage savings

ENVIRONMENTAL RESPONSIBILITY

- ✓ No timber used, preserving forests
- ✓ No chemical leaching
- ✓ Fully recyclable at end of life
- ✓ Long service life

HEALTH & SAFETY

- ✓ Lightweight design
- ✓ No special tools or skills required
- ✓ Won't crack or crumble
- ✓ Designed to meet requirements of AS/NZS 1170.0 for Earthquake/Seismic resilience

QUICK & EASY

- ✓ Can be assembled on site by two persons only
- ✓ No special skills required
- ✓ No heavy machinery required to lift & position
- ✓ Components simply lock together
- ✓ Consistency of finished install regardless of installer



★
FLAT PACKED
FOR SHIPPING
& STORAGE





Smart® Band

★
**NEW
PRODUCT**

No matter what your application(s) - if you currently use stainless steel strap, you will be able to use Smart® Band as a replacement.

✓ **SAFER** ✓ **NO SHARP EDGES** ✓ **NON-CONDUCTIVE** ✓ **EASIER TO INSTALL**

FEATURES

- ✓ No sharp edges
- ✓ Non-metallic, non-conductive
- ✓ Use wherever you'd normally use stainless strapping
- ✓ Strengthened with glass fibre strands
- ✓ Available in 12.7mm & 19mm
- ✓ Glass Fibre Strands within band provide superior strength and retention

CAT NO.

DESCRIPTION

SB-BA-FX-1/2-POM-30M	12.7MM SMART BAND FLEX REEL (30M)
SB-BU-FX-1/2-LH-POM	12.7MM SMART BAND FLEX BUCKLES (100 PCE)
SB-BA-3/4-30M-PA66	19MM SMART BAND STANDARD STRAP REEL (30M)
SB-BU-3/4-ST-PA66	19MM SMART BAND STRAP BUCKLES (30 PCE)
SM-FT-2000-13-FX	12.7MM SMART BAND FLEX MANUAL FITTING TOOL
SB-BU-3/4-ST-PA66	19MM SMART BAND TOOL - MANUAL WITH BUILT IN CUTTER



SMART® BAND STANDARD



SMART® BAND FLEX



Flexibility, simplicity and speed

The solution provides easy-to-install hardware that keeps a complex cabling scenario to a minimum and mindfulness of space requirements.

Primarily targeted for use on outgoing feeders of the LV Distribution Transformer, the Feedernet LV Monitor can be deployed anywhere single or multiple load monitoring is required. The system actively sums the outgoing feeders to provide a total (incoming) load.

Identify phase balancing, overloading, power factor and THD issues or supplement grid-wide ADMS implementations with valuable Feeder load and voltage data.

FEATURES

- ✓ Fast retrofit installation
- ✓ Fast commissioning with Android App
- ✓ Add up to 8 x 3-phase feeders
- ✓ 3 x Rogowski coil sizes (60mm / 150mm / 300mm)
- ✓ Feedernet bus wiring harness minimises sensor cabling
- ✓ Modular design allows automatic detection of additional sensors
- ✓ Cellular 4G LTE CAT1 or Optional Ethernet backhaul
- ✓ SCADA / DNP3 / MODBUS / IEC61850 / Azure Cloud compatible
- ✓ Multiple export formats available
- ✓ Staging web portal for administration and data analysis
- ✓ Over-the-air configurations + firmware updates
- ✓ Already in use in NZ



Daisy chain up to 8x 3phase circuits



Rapidly increase your LV visibility with Haysys Feedernet today!



RPIT plug-in termination system for gas insulated switchgear up to 42kv

The increasing popularity of gas insulated switchgear called for more appropriate connection systems for standardised bushings in accordance with EN 50181. The Raychem Plug-In Terminations (RPIT) separable connectors range is the solution.

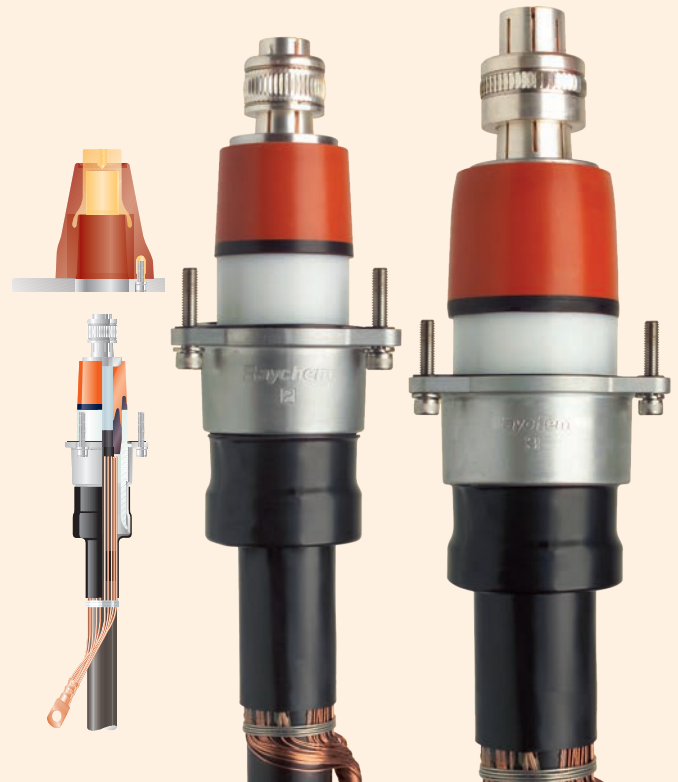
The inner cone termination incorporates a high-quality contact system which ensures reliable current transmission from the cable conductor to the busbar. The electrical interfaces between the silicone stress relief cone to the cable and the bushing are kept permanently sealed using a pressure component. This element is housed in the protection cover, which is sealed with heat-shrinkable tubing.

Consistent, high quality products, backed by extraordinary customer support.



FEATURES

- ✓ Extension of current application to cover 800 and 1000mm² cable up to 42 kV with size 3 bushing
- ✓ Separable inline connection for high current, gas insulated switchgear and transformers up to 42kV
- ✓ Termination mates interfaces in accordance with EN 50180 (and EN 50181 for inner cone connections)
- ✓ Optional voltage detection point
- ✓ Contact parts are designed for stranded circular Aluminium or Copper conductors in accordance with IEC 60228
- ✓ Metal-enclosed, hermetically insulated and suitable for outdoor use
- ✓ Special designs for wind power stations and offshore applications with bronze protection cover
- ✓ Full line of other RPIT accessories available including bushings, insulating caps, and current testing tools



CAT NO.	SIZE	NOMINAL CURRENT (A)	SYSTEM VOLTAGE (KV)	CROSS SECTION (MM ²)	DIA. OVER CONDUCTOR (MM)	DIA. OVER INSULATION (MM)
RPIT-33XX			12	240-1000	17.0-40.0	26.0-58.8
RPIT-53XX	3	1250	24	150-1000	13.0-40.0	26.0-58.8
RPIT-63XX			36/42	70-1000	7.6-40.0	26.0-58.8



AUTHORISED DISTRIBUTOR

TE's Raychem RPIT are available with and without voltage detection up to 42kV 630mm². For over insulation diameters greater than 50mm, RPIT voltage detection is not available.

RPIT installation tool available to hire. Contact us for more info.



LV lugs & links

The TransNet LV Contractor Series range includes both lugs and links for use on Low Voltage (LV) connections. These connectors are range taking which helps to minimise the inventory required to cover the majority of LV connections and terminations in NZ.



Made from high strength, tin plated Aluminium alloy, these connectors are made to the highest international standards and offer excellent reliable connections for LV installations up to 1kV.



UP TO 1KV



ALUMINIUM & COPPER LV CABLE



RANGE TAKING



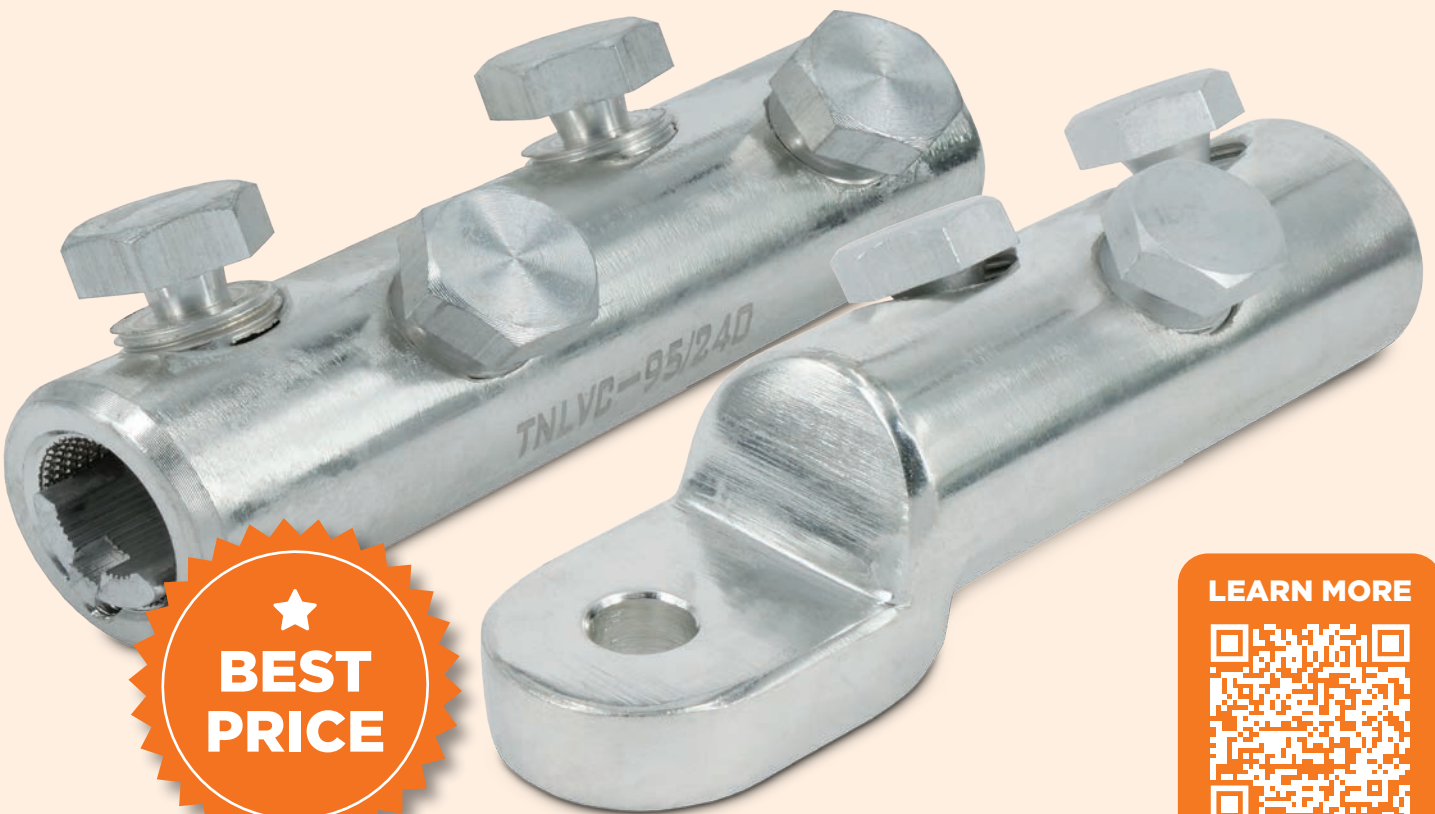
RANGE COVERS 10-630MM²



TESTED TO IEC 61238-1



SHEAR HEAD BOLTS





Proven performer in NZ for more than 20yrs

Designed in NZ for NZ, the TUDS range is rugged, tamper-proof, reliable, and cost-effective. Versatile in its application, TUDS pits accommodate various connections from all utilities.

With more than 100,000 installed across New Zealand and the South Pacific, TUDS really is the **Total Underground Distribution System**.

FEATURES

- ✓ Multi use, can accommodate any type of underground connection/demarcation point (identification discs available)
- ✓ Lightweight and easily transported
- ✓ Perfect for infill housing or tight accessways
- ✓ Huge range of pit sizes and shapes up to 1200x1200mm (internal dimensions)
- ✓ Risers enable height adjustable modular pits at 100 & 300mm increments
- ✓ Class B, C, D lid and cover sets available
- ✓ Faster and easier installation time
- ✓ Can be installed flush with ground on any angle
- ✓ Exceeds requirements of all relevant AS/NZS standards

TUDS SUBMERSIBLE ELECTRICAL FITTINGS

- ✓ Fully submersible electrical fittings up to 100amp
- ✓ Resistant to sweating and overheating
- ✓ Kitset system allows additional fuses to be added easily at any time
- ✓ Customer connections made off directly into the pit, protecting them from damage
- ✓ No need to level the pit, it can follow the natural landscape, fittings will remain waterproof





Load lifting accessories



Slack Block Set

Includes: Pee Wee Blocks (p/n: HL-4C and HL-5) and Swivel Hook (p/n: HL-3) with 25ft of 3/8"Yale Polyale Plus™ Single Braid Rope.

CAT NO.	DESCRIPTION
HL-S25B	EAGLE SLACK BLOCK SET - BRAIDED ROPE 7.6MTRS



Ritz Snatch Block

With a 5/8" diameter, 16mm O.D. rope capacity and weighing just 1.2kg, these versatile units are a must have.

CAT NO.	DESCRIPTION
2230-1	RITZ SNATCH BLOCK, RATED WORK LOAD 1250LB



N-1500P-EX

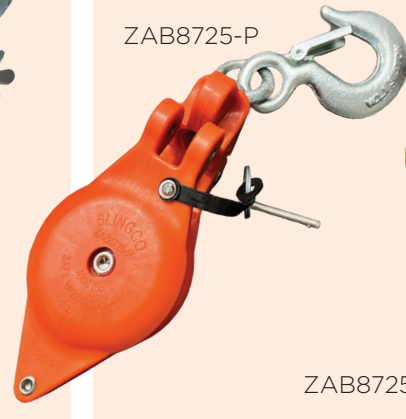


1702-20N

Strap Hoists

Perfect for tasks such as pulling slack wire, tensioning cables, tightening guy wires or placing transformers etc, these units feature a nylon strap.

CAT NO.	DESCRIPTION
N-1500P-EX	STRAP HOIST 1.5TON, LENGTH 500-2000/3500MM
1702-20N	KLEIN HOWE WIRE TOOL (NYLON STRAP)



ZAB8725-P

ZAB8725

Nylon Rope Blocks

Slingco's Hand Line Blocks feature a 3" nylon fiberglass block, with a safe working load limit of 1,000 lb.

These 3" Hand Line Blocks sheave can accommodate a 5/8" diameter rope, and operates smoothly on the 1/2" diameter axle and swivel bearings. The side opening feature allows quick access to remove the hand line.

FEATURES AND BENEFITS

- ✓ 3" nylon fiberglass block with 1,000 lb Safe Working Load limit
- ✓ Side opening feature allows quick access to remove the hand line

CAT NO.	DESCRIPTION
ZAB8725	SLINGCO HAND LINE BLOCK - RATED WORK LOAD 453KG - SCREW PIN RELEASE
ZAB8725-P	SLINGCO HAND LINE BLOCK - RATED WORK LOAD 453KG - PUSH PIN RELEASE

Contact us to order

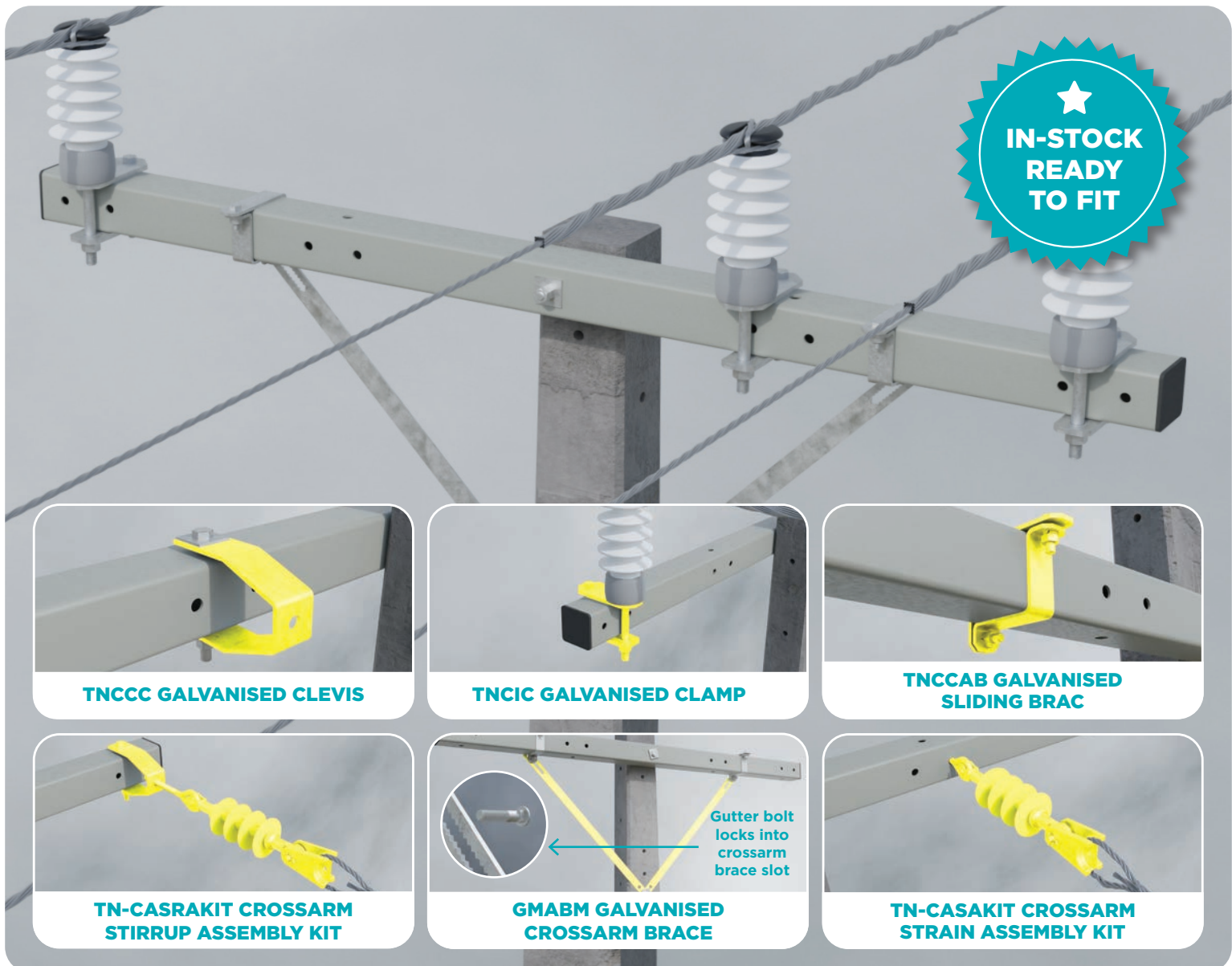


Composite crossarm accessories

Crossarms are fundamentally the backbone in powerline construction. Historically made of hardwood, there is variation entering the industry by way of galvanised steel and composite options.

With the limited supply of tropical and Australian hardwoods putting pressure on availability, it's time to embrace these alternatives.

Composite crossarms require a specific set of accessories and we've got a full range in stock ready to fit. Made from galvanised steel, these accessories are built to last.



TNCCC GALVANISED CLEVIS

TNCIC GALVANISED CLAMP

TNCCAB GALVANISED SLIDING BRAC

TN-CASRAKIT CROSSARM STIRRUP ASSEMBLY KIT

GMABM GALVANISED CROSSARM BRACE

TN-CASAKIT CROSSARM STRAIN ASSEMBLY KIT

Contact us to order

Trust the best for your installations

RAYCHEM WCSM - IN STOCK NOW!



Auckland

78 Cryers Road
East Tamaki
Auckland
NEW ZEALAND
Ph 0800 442 182
PO Box 39 383
Howick, Auckland

Wellington

10 Petone Ave
Petone
Wellington
NEW ZEALAND
Ph 04 576 2530
PO Box 39 383
Howick, Auckland
NEW ZEALAND
sales@transnet.co.nz

TransNet Tonga

Nuku'alofa

Lakalakaimonu Multi Utility
Complex
Taufa'ahau Road
Poutaha
Nuku'alofa
TONGA
Ph +67 627 939
PO Box 2932
Nuku'alofa
TONGA
transnet@kalianet.to



Raychem WCSM has been tried and trusted in New Zealand for more than 50yrs, it's durable, reliable and readily available.

WCSM FEATURES

- ✓ High shrink ratio
- ✓ Direct bury
- ✓ Sealant lined
- ✓ Resistant to chemicals corrosion and decay
- ✓ Fast, cost-effective way to waterproof joints
- ✓ Seals over irregular shapes
- ✓ Restores mechanical strength to joints
- ✓ Non-toxic - Halogen, Silicon, Lead & Aluminium free
- ✓ UV stable
- ✓ Unlimited Shelf Life



Supported by our local team of
Raychem Technical Experts



AUTHORISED DISTRIBUTOR



TransNet NZ Ltd has made every reasonable effort to ensure the accuracy of this information and it is to the best of our knowledge correct and reliable. Under no circumstances does this constitute an assurance of any particular quality or performance and users should independently evaluate the suitability of products for their desired application. All information in this publication including pricing, drawings, illustrations, images and graphic designs are reflections of our current understanding. TransNet NZ Ltd reserves the right to make any adjustment to this information at any time. Our liability for the products outlined in this publication is set forth in our standard terms and conditions of trade. In case of any potential ambiguities or questions, please contact us for clarification.